

## Geotechnical Courses

Soil Description Workshop  
13th July 2016, 12th August 2016  
Rock Description Workshop  
14th July 2016, 25th August 2016  
Geo Foundation Design  
28th June 2016



## Geotechnical Courses

In Situ Testing  
9th August 2016  
Geotech' Lab Testing Awareness  
26th July 2016  
4th October 2016



## Health & Safety Courses

IOSH Safe Supervision (3 Day)  
3rd - 5th August 2016  
IOSH Avoiding Danger (1 Day)  
19th July 2016, 24th August 2016  
IOSH Working Safely (1 Day)  
21st July 2016



## Other Events

Geotechnica 2016  
6th & 7th July 2016  
@ Brunel University, London



# theGeotechnica

June 2016 | Issue 51

## Geotechnica

# 2016



www.geotechnica.co.uk

## Event Preview

Why you need to be at Brunel University in the first week of July



### Investment in Individuals

A closer look at The Geotechnical Academy's shared learning experience

### Precast Pile Perceptions

Aarsleff challenge some people's perceptions on the use of precast piles

### Safe and Legal use of Water

Geotechnical Engineering provide a guide to using water on geotechnical sites



## GROUND INVESTIGATION: GETTING IT RIGHT

The true value of a good ground investigation is all too often missed and as an industry we often revert to blaming the client or resigning ourselves to 'lowest cost always wins'. However, the geotechnical industry is full of intelligent, competent, resourceful and hard-working individuals.

**Geotechnica 2016** will reflect on the current 'state of the industry', look at what the industry is doing well, lessons learnt from past and ongoing projects, innovations and emerging technologies. It is an inclusive event and will be used to share knowledge, promote best practice and help the industry debate, evaluate and establish initiatives to move forward.

### Why should you be at Geotechnica 2016?

- **Communicate** with industry leading practitioners, academia, suppliers and manufacturers.
- **Promote** your specialist services, latest products and innovations.
- **Network** with peers, suppliers, manufacturers, new potential clients and customers.
- **Learn** about different approaches, techniques and what is going on within and around the industry.

### Who will you see at Geotechnica 2016?

Over the last eight years Geotechnica has successfully attracted almost every single one of the UK's largest geotechnical companies, from **clients** to **contractors**, **laboratories** to **geophysicists** - anyone who is anyone in the geotechnical industry has visited Geotechnica. Expect to see the industry's **brightest and best minds**, as well as some excellent **product manufacturers** and **suppliers**.

### Conference Keynote Speakers



**Wednesday 6th July**  
**Professor Eddie Bromhead**  
 Chief Scientific Editor QJEGH Editorial Board - The Geological Society & Former Professor - Kingston University



**Thursday 7th July**  
**Professor Iain Stewart**  
 Director of Sustainable Earth Institute - Plymouth University

### Evening Networking Gala Dinner

Sponsored by Geotechnical Engineering Ltd



Held at Brunel University on Wednesday 6th July

### How do you register?

Simply head online to [www.geotechnica.co.uk](http://www.geotechnica.co.uk) to register now.

**CONFERENCE DELEGATE PACKAGES**  
**JUST £150 + VAT PER PERSON**  
 25% DISCOUNT FOR ACADEMICS / STUDENTS

# Contents

- 7** [Investment in Individuals](#)  
 In this month's issue of theGeotechnica, we take a closer look at The Geotechnical Academy - a shared learning experienced devised and delivered as a collaborative effort by Geotechnical Engineering and Equipe Training. The Geotechnical Academy will be providing taster sessions at Geotechnica 2016 - to register to attend this year's biggest dedicated geotechnical conference and exhibition, [click here](#).
- 13** [Challenging the Perception of Precast Piles](#)  
 Providing an in-depth insight into precast piles are Aarsleff, one of theGeotechnica's valued regular contributors and also one of the UK's leading piling contractors. Although widely used in Europe and beyond, precast piles are only just starting to land in the UK.
- 17** [Geotechnica 2016 - Why should you be there?](#)  
 In this issue of theGeotechnica, we look forward to this year's Geotechnica and outline exactly why you should be attending 2016's event. Whether it is to attend the always excellently received conference featuring high profile speakers such as Professors Eddie Bromhead and Iain Stewart; discover the latest product developments and innovations; meet prospective clients, contractors and suppliers, or to catch up with friends new and old - Geotechnica offers something for everyone.
- 27** [Using Water Safely and Legally](#)  
 Providing the fifth in a series of pieces for theGeotechnica is Liz Withington, Senior Manager at Geotechnical Engineering Ltd. The safe and legal use of water on geotechnical sites is the subject of Liz's latest advisory pieces.
- 31** [Directory](#)



# EQUIPE TRAINING Health and Safety Courses

DELIVERED IN PARTNERSHIP WITH: **RPA SAFETY SERVICES LTD**

## IOSH Safe Supervision of Geotechnical Sites

This three day geotechnically focussed health and safety course has been developed by industry specialists and is a unique course for managers and supervisors involved in projects in the drilling and geotechnical industry. The course is certified by IOSH and has been approved by The Environment Agency, Thames Water, AGS and BDA and also meets all of the requirements of the UKCG (formerly the Main Contractor's Group).

**NEXT COURSE DATES:** 3rd - 5th August 2016  
7th - 9th September 2016

## IOSH Avoiding Danger from Underground Services

This one day geotechnically focussed health and safety course follows the requirements and guidance set out within HSG47 and includes the four chapters; identifying and managing the dangers; planning the work; detecting, identifying and marking and safe excavation. Important aspects include the use of real examples from the geotechnical industry and delivery by chartered advisors who are from within the industry.

**NEXT COURSE DATES:** 19th July 2016  
24th August 2016

## IOSH Working Safely (on Geotechnical Sites)

This one day geotechnically focussed health and safety course has been developed by industry specialists as a foundation to site safety for all personnel involved in projects in the drilling and geotechnical industry. Its aim is to impart the core safety skills required of those working on geotechnical sites by building on their existing specialist technical skills and making it relevant to their place of work.

**NEXT COURSE DATES:** 21st July 2016  
16th September 2016



For more information, contact Equipe Training:

✉ info@equipegroup.com

🌐 www.equipegroup.com

☎ +44 (0)1295 670990

📞 +44 (0)1295 678232

🌐 Equipe Group

🐦 @EquipeGroup

📺 EquipeGroup



# Welcome

Welcome to the 51st Edition of **theGeotechnica** - the UK's fastest growing online geotechnically focussed e-magazine.

In the opening article of this month's issue, we take a closer look at The Geotechnical Academy - a shared learning experienced devised and delivered as a collaborative effort by Geotechnical Engineering and Equipe Training. The Geotechnical Academy will be providing taster sessions at Geotechnica 2016 - to register to attend this year's biggest dedicated geotechnical conference and exhibition, [click here](#).

Next up, providing an in-depth insight into precast piles are Aarsleff, one of **theGeotechnica's** valued regular contributors and also one of the UK's leading piling contractors. Although widely used in Europe and beyond, precast piles are only just starting to land in the UK.



Following on from Aarsleff's look at precast piles, we look forward to this year's Geotechnica and outline exactly why you should be attending 2016's event. Whether it is to attend the always excellently received conference featuring high profile speakers such as Professors Eddie

Bromhead and Iain Stewart; discover the latest product developments and innovations; meet prospective clients, contractors and suppliers, or to catch up with friends new and old - Geotechnica offers something for everyone.

Our final contribution and providing the fifth in a series of pieces for **theGeotechnica** is Liz Withington, Senior Manager at Geotechnical Engineering Ltd. The safe and legal use of water on geotechnical sites is the subject of Liz's latest advisory pieces.

As with every new edition of the magazine, the Editorial Team here at **theGeotechnica** will be on the lookout for even more new, original and interesting content from all corners of the sector, and would actively encourage all readers to come forward with any appropriate and relevant content - whether it be a small news item or a detailed case study of works recently completed or being undertaken. If this content is media rich and interactive, then all the better. We are looking to increase the already large readership of the magazine through better social media integration and promotion, as well as improving content month on month.

Finally, for any content that is submitted we will ensure that an advertising space, proportionate to the quality of content provided, is reserved should you wish to place an advert in that single edition of the magazine. We hope you enjoy this month's edition of the magazine and are inspired to contribute your own content for the coming editions of **theGeotechnica**.

**Editorial Team,  
theGeotechnica**



# INVESTMENT IN INDIVIDUALS

In this month's issue of the *Geotechnica*, we take a closer look at [The Geotechnical Academy](#) - a shared learning experience devised and delivered as a collaborative effort by [Geotechnical Engineering](#) and [Equipe Training](#). The Geotechnical Academy will be providing taster sessions at Geotechnica 2016 - to register to attend this year's biggest dedicated geotechnical conference and exhibition, [click here](#).

As professionals, whether as geologists, engineering geologists, geo-environmental engineers, structural engineers or civil engineers we all have a responsibility to keep our knowledge and skills up to date. By doing this in a structured way we can plan our continuing professional development (CPD) for our own individual career objectives and review the value of the activities. By the careful planning, use and evaluating of CPD employers will gain assurance that you

“CPD will be gained by the learning of theory, from practical experience, from mentoring and from the sharing of ideas.”

are competent to do your job. Personally you gain credibility with your colleagues and peers, you gain confidence and you are ready to tackle new challenges. CPD will be gained by the learning of theory, from practical experience, from mentoring and from the sharing of ideas.

Since 2012, the ►►

## THE GEOTECHNICAL ACADEMY

**Got the theory but missing the practice?**

**On-the-ground practical training for aspiring geo-professionals**

The Geotechnical Academy is a partnership between Geotechnical Engineering Ltd & Equipe Training, providing a unique, good value, high quality vocational geotechnical CPD and **training** to propel bright engineers through professional hoops and hurdles.

◆◆◆ **Enlisting Now** ◆◆◆

Interested or know someone who might be?

**Contact us on: 01452 527743**

Or visit our website: [www.geotechnicalacademy.co.uk](http://www.geotechnicalacademy.co.uk)

◆ Peer support ◆ Mentoring ◆ Debate & Discussion ◆ Demonstrations ◆ Knowledge Transfer ◆ Confidence Building ◆ 8 sessions per group throughout the year





Geotechnical Academy (TGA) has developed the knowledge and understanding of over 90 early career geo-professionals in line with accepted CPD practice by providing the theory, the practical experiences and the opportunity to learn and share geotechnical practice.

**“The Academy aims to provide attending delegates with a broad experience of all aspects of working in the geotechnical sector...”**

The Academy aims to provide attending delegates with a broad experience of all aspects of working in the geotechnical sector of the construction industry. Over ten modules TGA delivers the theory and

the practice for planning an SI, an appreciation of Health and Safety, how to choose the right site investigation technique, insitu testing, instrumentation, soil and rock logging, contaminated land issues, physical laboratory testing, how to formulate the ground model and look at geotechnical risk.

The first part of each day is delivered in the classroom, providing the detailed theory, the legislation and the standards within which each subject area operates. Real examples are used and there is ample opportunity to question and develop knowledge.

After the all-important mid-morning coffee break the day's practical activities begin. This may be visiting a local site with a major landslip issue, conducting a safety audit on a rig, carrying out insitu testing, visiting a chemical testing laboratory or learning how to do a physical laboratory test.

The final session of the day brings the delegates together for a facilitated discussion which may be of the day's work or a current geotechnical issue. External speakers are often invited to add further depth to the delegates experiences.

Does this interest you? For a taster of what TGA can offer you or your team why not attend Geotechnica 2016 where we will be providing the Geotechnica 2016 “Fringe Festival” to the main conference. Here speakers from across the industry will be practically demonstrating on the subject of the management of risk. This will include managing your data, laboratory testing, site investigation techniques or producing the ground model. ■

For more information, please visit the Geotechnica 2016 website at Geotechnica 2016 | Home or email TGA Course Leader.



## CPD Approved Courses for Geotechnical Academy Alumni

### Specifying Site Investigations

This one day course will look at the various methods available to carry out intrusive and non intrusive investigation. Whilst the course will concentrate on geotechnical methods some geo-environmental methods will be briefly discussed. The course will look at the aims of SI and categorise the various stages in an investigation.

### Soil Description Workshop

From 2007 new European Standards have started replacing the British Standards (Codes) under which investigations in the UK have been carried out. UK working practice will have to change to meet these new requirements but few practitioners are aware of the changes or the timetable. The workshop will comprise a series of lectures on the changes, and lectures on soil description followed by practical sessions describing soil samples.

### Rock Description Workshop

From 2007 new European Standards have started replacing the British Standards (Codes) under which investigations in the UK have been carried out. UK working practice will have to change to meet these new requirements but few practitioners are aware of the changes or the timetable. The workshop will comprise a series of lectures on the changes, and lectures on rock description followed by practical sessions describing rock and compiling mechanical logs of rock core.

### In Situ Testing

The course will cover both the theory and the practice of various In Situ Testing techniques used on typical geotechnical projects. In addition the courses will consider the effect that Eurocodes will have on the UK's current practice. This course provides an overview of in situ tests used in common practice and some of the more specialist tests together with their advantages and limitations.

### Field Instrumentation and Monitoring

The course comprises a comprehensive one day appreciation of the complete process involved in Instrumentation and Monitoring in the geotechnical environment. The course provides an overview of the current guidance documents and their requirements. The course will consider the design of both individual installations and the installation of suites of instruments in the wider site context.

### Geotechnical Foundation Design

This one day course will provide a general overview of foundation design. It will include an assessment of the use and choice of shallow foundations and piles. It will cover the derivation of bearing capacity formula and their use. Exercises will be carried out to calculate the working loads and settlement of simple foundations. The methods used to calculate these will be in accordance with those described in Eurocode.

### IOSH Working Safely (on Geotechnical Sites)

This one day course is developed by industry specialists within RPA Safety Services and Equipe Training as a foundation to site safety. Its aim is to impart the core safety skills required of those working on geotechnical sites by building on their existing specialist technical skills. After attending the course, candidates should be able to identify hazards on site, understand basic safety legislation, participate fully and confidently in site safety consultation and manage priority risks to a sufficient standard.

### IOSH Avoiding Danger from Underground Services

Partnering with RPA Safety Services once again, Equipe provide another IOSH certified health and safety course. This one day course is aimed at anybody involved in specifying, instructing, managing, supervising or actually breaking ground and really addresses the problems and risks related to underground services, which may be encountered during both planning and execution of geotechnical projects.

### IOSH Safe Supervision of Geotechnical Sites

Equipe has partnered with RPA Safety Services, an independent occupational health and safety specialist, to provide a unique IOSH certified course for the Drilling and Geotechnics industry. The three day course is certified by IOSH, is specifically focussed on the geotechnical industry and provides a totally unique and relevant Health and Safety course for managers and supervisors.

Visit our websites for more details:  
[www.geotechnicalacademy.co.uk](http://www.geotechnicalacademy.co.uk)  
[www.equipgroup.com](http://www.equipgroup.com)



A collaboration between



# GEOTECHNICAL COURSES

**SOIL DESCRIPTION WORKSHOP - £275 + VAT**

**@Equipe Offices, Banbury**

13th July 2016  
12th August 2016  
15th September 2016

**ROCK DESCRIPTION WORKSHOP - £275 + VAT**

**@Equipe Offices, Banbury**

14th July 2016  
25th August 2016  
6th October 2016

**GEOTECHNICAL FOUNDATION DESIGN - £225 + VAT**

**@Equipe Offices, Banbury**

28th June 2016  
10th August 2016  
21st September 2016

**IN SITU TESTING - £225 + VAT**

**@Equipe Offices, Banbury**

9th August 2016  
18th October

**GEOTECHNICAL LABORATORY TESTING AWARENESS - £225 + VAT**

**@Brunel University, London**

26th July 2016  
4th October 2016



## UPCOMING COURSES IN 2016

FROM THE UK'S LEADING GEOTECHNICAL TRAINING PROVIDER

Supported by



BOOK ONLINE NOW @ [WWW.EQUIPEGROUP.COM](http://WWW.EQUIPEGROUP.COM)

To book your place, please contact Equipe Training:



info@equipegroup.com  
www.equipegroup.com  
+44 (0)1295 670990  
+44 (0)1295 678232

Other courses are available. Please visit our website for more details.

## WANT TO ADVERTISE IN THE GEOTECHNICA?

1. Select your advert size.  
(Full, Half, Quarter Page, Directory Entry)
2. Select timescale.  
(1, 3, 6 or 12 Months)
3. Format your artwork.  
(Adobe PDF, .jpg or .png)
4. Send your artwork to us.  
(magazine@geotechnica.co.uk, or contact us on 01295 670990)

### Advert Size      Single Insertion

Double Page	£980
Full Page	£550
Half Page	£310
Third Page	£260
Quarter Page	£160
Sixth Page	£125
Directory Entry (Art)	£40

Rates for advertisements placed for longer than a single month are negotiable. Please contact magazine@geotechnica.co.uk for details.

2016 Advertising Rates (£) - All rates are given excluding VAT.

**Chemtest**  
The UK & Ireland's premier environmental laboratory



## The right chemistry to deliver results...

Analysis is undertaken for the following industry sectors:

- Environment
- Remediation
- Geotechnical
- Rail
- Construction
- Waste Management
- Asbestos
- Petrochemical

For more information on our services please contact us on  
t. +44 (0) 1638 60 60 70 w. [chemtest.co.uk](http://chemtest.co.uk)

**Chemtest**  
Deport Road, Newark, CE6 6AL  
22 Herald Way, Coventry, West Midlands CV5 2RQ  
Unit 3, Kennedy Enterprise Centre, Blackstaff Road, Belfast, BT11 9DT

We drill boreholes, waterwells and install soakaways.  
We can work over water and in restricted access sites.  
We supply and hire a variation of drilling rigs including Dando 3000 and cut-down rigs throughout the UK and Continental Europe.  
We supply and hire large casing and tooling as well as grout trailers.  
**Plus much, much more.**



Any borehole. Any depth.  
Anytime. Anywhere.

Contact us for more information or to enquire about our services:

T: 01733 200501  
M: 07969 715655  
E: boreholesolutions@gmail.com

Borehole Solutions Ltd HQ

25 Aaron Road  
Whittlesey  
Peterborough  
PE7 2EX





# CHALLENGING THE PERCEPTION OF PRECAST PILES

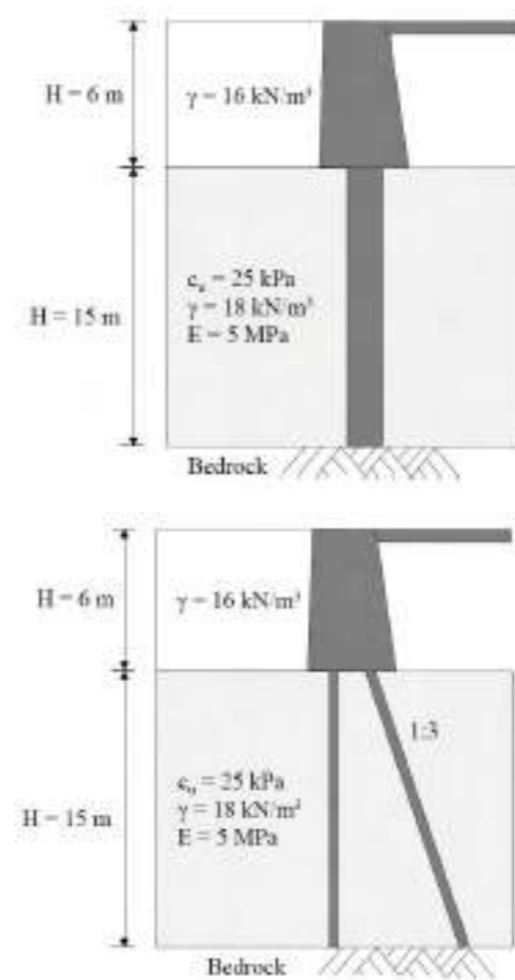
Providing an in-depth insight into precast piles are [Aarsleff](#), one of the [Geotechnica's](#) valued regular contributors and also one of the UK's leading piling contractors. Although widely used in Europe and beyond, precast piles are only just starting to land in the UK.

Precast piles are a robust and cost-effective alternative piling solution for civil engineering and infrastructure projects. Offering a number of benefits and advantages over existing methods, including cost, Aarsleff is proactively challenging the current

mind-set and driving change throughout the construction sector.

## An Engineering Overview

Whilst the UK Construction Industry defaults to Large Diameter Bored Piles for infrastructure work, In Europe



“Using a combination of vertical and raking piles a solution can be provided that efficiently caters for the vertical and longitudinal actions associated with bridge abutments, piers and many other structures.”

and beyond, the use of Precast Concrete Driven Piles or Steel Tubes are the norm.

Using a combination of vertical and raking piles a solution can be provided that efficiently

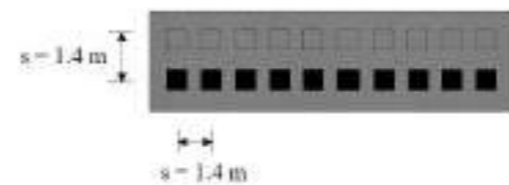
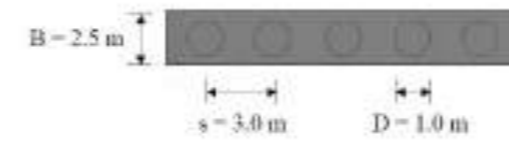
Figure 1.

diameter bored piles in the region of 900mm to 1200mm nominal diameter.

Consider 1050mm piles, 15m long piles with 10No. H40 full length main bar reinforcement (shown in Figure 1).

- Concrete Volume = 65m<sup>3</sup>
- Weight of Steel = 7.4 tons

Figure 2.



caters for the vertical and longitudinal actions associated with bridge abutments, piers and many other structures. The combination of actions can be resolved into axial loading, however, should there be any resulting lateral load or induced bending moment from embankment surcharge; Aarsleff's proprietary Engineering Piles can be reinforced to suit.

A worked engineering overview of a precast concrete pile alternative that offers a viable cost-effective and sustainable alternative is presented here:

Consider a single span road bridge with typical bridge end support loads of say 12,000kN in compression and 600kN longitudinal load. Current UK design approach currently favours a single row of large

- 65+ m<sup>3</sup> of spoil to remove.
- On-site curing time to be allowed for.

- Adjacent piles cannot be installed in the same day, increasing costs in sequencing arrangement and program time.
- Weather dependent.

- Approximate Piling Cost £40,000 to £45,000

The alternative option as adopted widely on the continent as shown above for the same bridge abutment example.

A combination of a single row of vertical piles with a corresponding row of raking piles as shown in Figure 2 can be used to effectively resist the axial and lateral loads applied by the bridge abutment.

- This offers a saving of 28m<sup>3</sup> of concrete and 2.1 tons of steel.
- Zero spoil to handle or remove from site.
- Clean operation.

“Piles installed in sequence therefore releasing follow on trades earlier and matching or bettering on-site install program compared to opposite.”

- Off-site build = Zero curing time on site.

- Factory Quality Piles

- Piles installed in sequence therefore releasing follow on trades earlier and matching or bettering on-site install program compared to opposite.

- Installation not effected by cold weather and offers a reduction in traffic movements on site.

- Approximate Piling Cost £25,000 to £30,000

After taking these factors into consideration it becomes apparent that using vertical and raking piles can efficiently cater for the vertical and longitudinal actions associated with bridge abutments, piers and many other structures. Not only are the vertical and raking piles efficient, they are also more economically and environmentally friendly.

For further details contact Aarsleff on 01636 611140, email [piling@arsleff.co.uk](mailto:piling@arsleff.co.uk) or visit [Aarsleff.co.uk](http://Aarsleff.co.uk). ■

THE UK'S LARGEST GEOTECHNICAL CONFERENCE AND EXHIBITION

# equip<sup>e</sup> Geotechnica 2016

COMMUNICATE. PROMOTE. NETWORK. LEARN. | 6-7 JULY 2016 | BRUNEL UNIVERSITY, LONDON

IN PARTNERSHIP WITH GOLD SPONSORS SILVER SPONSORS BRONZE SPONSORS



## GROUND INVESTIGATION: GETTING IT RIGHT

The true value of a good ground investigation is all too often missed and as an industry we often revert to blaming the client or resigning ourselves to 'lowest cost always wins'. However, the geotechnical industry is full of intelligent, competent, resourceful and hard-working individuals.

**Geotechnica 2016** will reflect on the current 'state of the industry', look at what the industry is doing well, lessons learnt from past and ongoing projects, innovations and emerging technologies. It is an inclusive event and will be used to share knowledge, promote best practice and help the industry debate, evaluate and establish initiatives to move forward.

### Why should you be at Geotechnica 2016?

- **Communicate** with industry leading practitioners, academia, suppliers and manufacturers.
- **Promote** your specialist services, latest products and innovations.
- **Network** with peers, suppliers, manufacturers, new potential clients and customers.
- **Learn** about different approaches, techniques and what is going on within and around the industry.

### Who will you see at Geotechnica 2016?

Over the last eight years Geotechnica has successfully attracted almost every single one of the UK's largest geotechnical companies, from **clients** to **contractors**, **laboratories** to **geophysicists** - anyone who is anyone in the geotechnical industry has visited Geotechnica. Expect to see the industry's **brightest and best minds**, as well as some excellent **product manufacturers** and **suppliers**.

### Conference Keynote Speakers



**Wednesday 6th July**  
**Professor Eddie Bromhead**  
 Chief Scientific Editor QJEGH Editorial Board - The Geological Society & Former Professor - Kingston University



**Thursday 7th July**  
**Professor Iain Stewart**  
 Director of Sustainable Earth Institute - Plymouth University

### Evening Networking Gala Dinner

Sponsored by Geotechnical Engineering Ltd



Held at Brunel University on Wednesday 6th July

### How do you register?

Simply head online to [www.geotechnica.co.uk](http://www.geotechnica.co.uk) to register now.

**CONFERENCE DELEGATE PACKAGES**  
**JUST £150 + VAT PER PERSON**  
 25% DISCOUNT FOR ACADEMICS / STUDENTS

## CONFIRMED CONFERENCE LINE-UP

### Wednesday 6th July

**09:00 - 09:15** **Professor Geoff Rogers**  
 Deputy Vice Chancellor (Research) - Brunel University  
**Introduction**

#### Keynote Address

**09:15 - 10:00** **Professor Eddie Bromhead**  
 Chief Scientific Editor QJEGH Editorial Board - The Geological Society & Former Professor - Kingston University  
**Title: Wise after the fact.**

### Session 1 - Planning: How to establish the right approach to Ground Investigation

**10:00 - 10:30** **Joe Murphy**  
 Head of Health and Safety (Area South) - HS2 Ltd  
**Title: Lessons learnt on HS2**

**10:30 - 11:00** **Tom Phillips**  
 Managing Director, RPA Safety Services  
**Title: Design and CDM - A joined up approach to the principles of good (safe) design.**

**11:00 - 11:30** **Professor Paul Nathanail**  
 Professor of Engineering Geology - Nottingham University & Managing Director - LQM Ltd  
**Title: Changes to the Planning system - revised National Planning Policy Framework; Planning & Housing Bill; Brownfield Registers.**

**11:30 - 12:00** **Morning Break & Networking**

### Session 2 - Testing & Sampling: Why bother?

**12:00 - 12:30** **Dr John Powell**  
 Technical Director - GEOLABS Ltd  
**Title: Geotechnical laboratory testing vs. In situ testing**

**12:30 - 13:00** **Tom Lunne**  
 Expert Advisor - Norwegian Geotechnical Institute  
**Title: Using offshore sample quality methodology for onshore investigations**

**13:00 - 15:00** **Lunch, Networking & Demonstrations**

### Session 3 - Managing Project Risk through Ground Specialist Services

**15:00 - 15:30** **Dr Simon Hughes**  
 Operations Manager - TerraDat  
**Title: The importance of Near Surface Geophysics in Geotechnical SI**

**15:30 - 16:00** **Kim Beesley**  
 Managing Director - European Geophysical Services  
**Title: How, When and Why to Geophysically Log in SI?**

**16:00 - 16:30** **Joseph Hobbs**  
 Technical Manager - Lankelma  
**Title: CPTs for High Risk Projects**

**16:30 - 17:00** **Mark Hudson**  
 Managing Director - Geoterra  
**Title: Mitigating your Risk - Subsurface laser scanning and multibeam sonar void surveys - What lies beneath & where?**

### Thursday 7th July

**09:00 - 09:15** **Julian Lovell**  
 Managing Director - Equipe Group  
**Introduction**

#### Keynote Address

**09:15 - 10:00** **Professor Iain Stewart**  
 Director of Sustainable Earth Institute - Plymouth University  
**Title: Between a rock and a hard place: communicating contested geoscience to the public.**

### Session 1 - Ground Investigation Techniques

**10:00 - 10:30** **Andrew Milne**  
 Project Chairman - AGS/BDA Task Force & Managing Director - Geotechnical Engineering  
**Title: Spotlight on the UK Ground Investigation Industry**

**10:30 - 11:00** **Professor David Norbury**  
 Director - David Norbury Ltd  
**Title: An overview of European GI**

**11:00 - 11:30** **Ben Gilson**  
 Senior Engineer (Geotechnics & Tunnelling) - Arup  
**Title: Micro to macro - Are UK linear infrastructure GIs suitable for investigating mass soil property characteristics?**

**11:30 - 12:00** **Morning Break & Networking**

### Session 2 - Ground Investigation

**12:00 - 12:30** **Nick Sartain**  
 Lead Geotechnical Engineer - HS2 Ltd  
**Title: Ground Investigation Challenges of HS2**

**12:30 - 13:00** **Dr Jackie Skipper**  
 Associate Director - Geotechnical Consulting Group  
**Title: Investigating and understanding the ground - why bother?**

**13:00 - 15:00** **Lunch, Networking & Demonstrations**

### Session 3 - Innovation and Emerging Technologies

**15:00 - 15:30** **Eng. Diego Marchetti**  
 Partner - Studio of Professor Marchetti  
**Title: The Flat Dilatometer: Applications and Recent Developments**

**15:30 - 16:00** **Dr Roger Chandler**  
 Managing Director - Keynetix  
**Title: Transforming Geotechnical Data**

**16:00 - 16:30** **Adrian Wilkinson**  
 Director - DroneSurf  
**Title: Drones - The Law and the Benefits**

### Panel Discussion - Where next for the industry?

**16:30 - 17:00** **Panel Members TBC**

**REGISTER ONLINE NOW FOR £150 + VAT @**  
[WWW.GEOTECHNICA.CO.UK](http://WWW.GEOTECHNICA.CO.UK)



info@geotechnica.co.uk



www.geotechnica.co.uk



+44 (0)1295 670990



+44 (0)1295 678232



Equipe Group



@EquipeGroup



+Equipe Group



Equipe Group



# Geotechnica 2016 **WHY SHOULD YOU BE THERE?**

www.geotechnica.co.uk



*Since its conception in 2009, Geotechnica has become the biggest and best geotechnically-dedicated conference and exhibition that the UK has to offer. From humble beginnings in marquees in a field on The Upton Estate in rural Oxfordshire, to the excellent purpose-built facilities of the Warwickshire Exhibition Centre, and now the prestigious and esteemed surroundings of Brunel University, Geotechnica has gone from strength to strength in the last 7 years.*

*In this issue of the Geotechnica, we look forward to this year's Geotechnica and outline exactly why you should be attending 2016's event. Whether it is to attend the always excellently received conference featuring high profile speakers such as Professors Eddie Bromhead and Iain Stewart; discover the latest product developments and innovations; meet prospective clients, contractors and suppliers, or to catch up with friends new and old – Geotechnica offers something for everyone.*

Equip are delighted to announce that Geotechnica 50th year. This year's event will be delivered in partnership with Brunel University to celebrate their 50th year. This year's event will feature an outstanding conference line-up which will

## **“Geotechnica 2016 will reflect on the current ‘state of the industry’...”**

be the focal-point of the two-day event.

Geotechnica 2016 will reflect on the current ‘state of the industry’, look at what the industry is doing well, lessons learnt from past and ongoing projects, innovations and emerging technologies. It is an inclusive event and will be used to share knowledge, promote best practice and help the industry debate, evaluate and establish initiatives to move



**“Eddie’s expertise in stress analysis and academia is sure to provide an exciting and insightful keynote address...”**

subject of slope stability that has gained him the most recognition, Eddie’s expertise in stress analysis and academia is sure to provide an exciting and insightful keynote address titled: “Wise after the fact.”.

forward.

### **Keynote Speaker excitement**

The first week of July 2016 will see two industry leading experts and highly popular figures deliver the keynote addresses for this year’s Geotechnica.

Firstly, kicking off Geotechnica 2016’s conference will be former Kingston University lecturer and world leading expert on slope stability, Professor Eddie Bromhead. With a wide-ranging career that spans 5 decades, Eddie is still greatly passionate about ground investigation. Although it may be his specialist



Titled: ‘Between a rock and a hard place: communicating contested geoscience to the public’, Iain will be exploring the issues around how we convey the technical aspects of fracking, CCS, radwaste etc to non-technical audiences. It will be emphasising interdisciplinary approaches, especially what we can

**“Professor Stewart’s keynote address for Geotechnica will place a focus on geocommunication. Titled: ‘Between a rock and a hard place: communicating contested geoscience to the public’...”**

learn from the human and behavioural sciences about how ordinary people view the subsurface environment. ►►



**“Iain will also be delivering an after-dinner speech on Wednesday evening at Geotechnica’s Networking Dinner.”**

Iain will also be delivering an after-dinner speech on Wednesday evening at Geotechnica’s Networking Dinner. This speech is bound to be a crowd pleaser, titled: ‘Travels in worlds that don’t exist - the trials and tribulations of putting geology on the box and the general lessons emerging from a decade of popular science’. Tickets are still available to all comers for the three-course gala Networking Dinner and can be purchased online.

**Planning: How to establish the right approach to Ground**

**Investigation**

The Geotechnica 2016 conference will provide an invaluable opportunity for the ground investigation industry, its clients and the supply chain, to discuss how best to plan ground investigations in order to obtain the best results possible.

This session has talks which discuss how planning is key to the ground investigation process and where the success of the project’s outcome is often established. Planning is not only about how the work is specified and executed but also about building a strong team and ensuring the strengths and expertise of the individuals and each party is used appropriately. This session will also discuss how proposed changes to the Planning System may affect geo-environmental ground investigations.

Accurate and thorough planning can save a Ground Investigation incredibly valuable time and money, the savings from which can then be utilised at another stage of

**“The first conference session of Geotechnica 2016 will provide instrumental insight into the planning process...”**

a project. The first conference session of Geotechnica 2016 will provide instrumental insight into the planning process that will undoubtedly benefit attending delegates to better equip themselves and apply their knowledge when planning their next GI project.

Speakers in this morning session include Joe Murphy,

High Speed 2’s Head of Health and Safety (Area South), who will discuss the lessons learnt by the HS2 team regarding the planning of one of the UK’s largest infrastructure projects ever undertaken. Following on from Joe will be Tom Phillips, Managing Director of industry health and safety specialists, RPA Safety Services. Tom will delve into the subject of Construction Design and Management Regulations – something which was highly discussed at last year’s Geotechnica. This year Tom will explain how CDM and GI design can join together to form the principles of a good, and safe, overall design. Finally, Professor Paul Nathanail will explain the changes to the planning system, including the Nation Planning Policy

Framework, Planning & Housing Bill and Brownfield Registers.

**Testing & Sampling: Why bother?**

Following on from the morning session’s focus on planning are presentations from some of the world’s leading specialists on geotechnical testing and sampling.

The value of geotechnical laboratory testing is currently in the spotlight and many leading consultants are disputing the need. As sample quality and representativeness is often unquantified and time constraints on projects are tightened the usefulness of laboratory test results as part of the design tool is becoming less critical. This session will

**“This session will open up the debate but also offer methods for quantifying quality and suggesting alternatives to laboratory testing such as in situ testing.”**

open up the debate but also offer methods for quantifying quality and suggesting alternatives to laboratory testing such as in situ testing.

Opening up the session will be GEOLABS Technical Director and geotechnical



CAN YOU AFFORD TO MISS OUT?  
**TICKETS ONLY £150 + VAT!**  
register @ [www.geotechnica.co.uk](http://www.geotechnica.co.uk)



IN PARTNERSHIP WITH

Brunel University London 50th Anniversary

**GOLD SPONSORS**

geotechnical

**SILVER SPONSORS**

ALC Environmental

Global Geotech

**URETEK**

**BRONZE SPONSORS**

DARDO

Go Geothermal

**Keynote Addresses**  
Prof. Iain Stewart  
Prof. Eddie Bromhead

**Over 35 Exhibitors**  
Including: Concrete Canvas, GEOLABS, Itasca, Lankelma

**PLUS MUCH MORE!**

laboratory testing expert Dr John Powell. Dr Powell will discuss the merits of geotechnical laboratory testing, whilst also comparing and contrasting the merits and pitfalls against in situ testing. Completing the session will be Tom Lunne, Expert Advisor at the Norwegian Geotechnical Institute, and also one of the world's leading experts on CPT. Tom will explain how offshore sample methodology can be used for onshore investigations in order to obtain the very best samples.

**Managing Project Risk through Ground Specialist Services**

**“The final session of Geotechnica’s first day will place a focus on some of the more specialist services available for the ground investigation sector.”**

The final session of Geotechnica’s first day will place a focus on some of the more specialist services available for the ground investigation sector.

This session will provide essential insights into the benefits of How, When and Why clients and specifiers should employ or deploy ground specialist services. Specialist



services such as geophysics, CPT, surveying etc are thought to be commonplace but are often not specified on projects because they are seen to be over-complicated, expensive or just poorly understood. The technical experts within this session will highlight the benefits of using such services, raise awareness of new technologies and provide useful advice for specifiers and users.

Taking up the case for the use of specialist geophysics in GI are Dr Simon Hughes of TerraDat and also Kim Beesley, Managing Director of European Geophysical Services. Both will discuss the importance of geophysics and also provide a guide as to how and when geophysical logging can be best utilised.

Demonstrating the advantages

of CPT usage on high risk projects will be Lankelma’s Technical Manager, Joseph Hobbs. Finishing off the first day of talks and completing the session of specialist services will be Geoterra’s Managing Director, Mark Hudson. Mark will discuss and explain the use of subsurface laser scanning and multi-beam sonar void surveys, focussing on how that can help to mitigate project risk.

**Ground Investigation Techniques**

Day two of Geotechnica 2016’s conference will place an overall spotlight on the ground investigation industry, and discuss what is going well and what needs to be improved.

Following on from the first Session on Wednesday, the theme for this session will



# KeyLogbook®

digital logging solution



## BOREHOLE AND TRIAL PIT LOGGING SOLUTION

KeyLogbook® revolutionises the way site data is captured, recorded and transmitted. Drillers and engineers no longer need to keep re-entering the same data repetitively. You will therefore reduce errors and make the whole process **simpler, faster, smarter, greener and more efficient**. The system records all site data at source and transmits it directly from site, saving time and money from the outset.

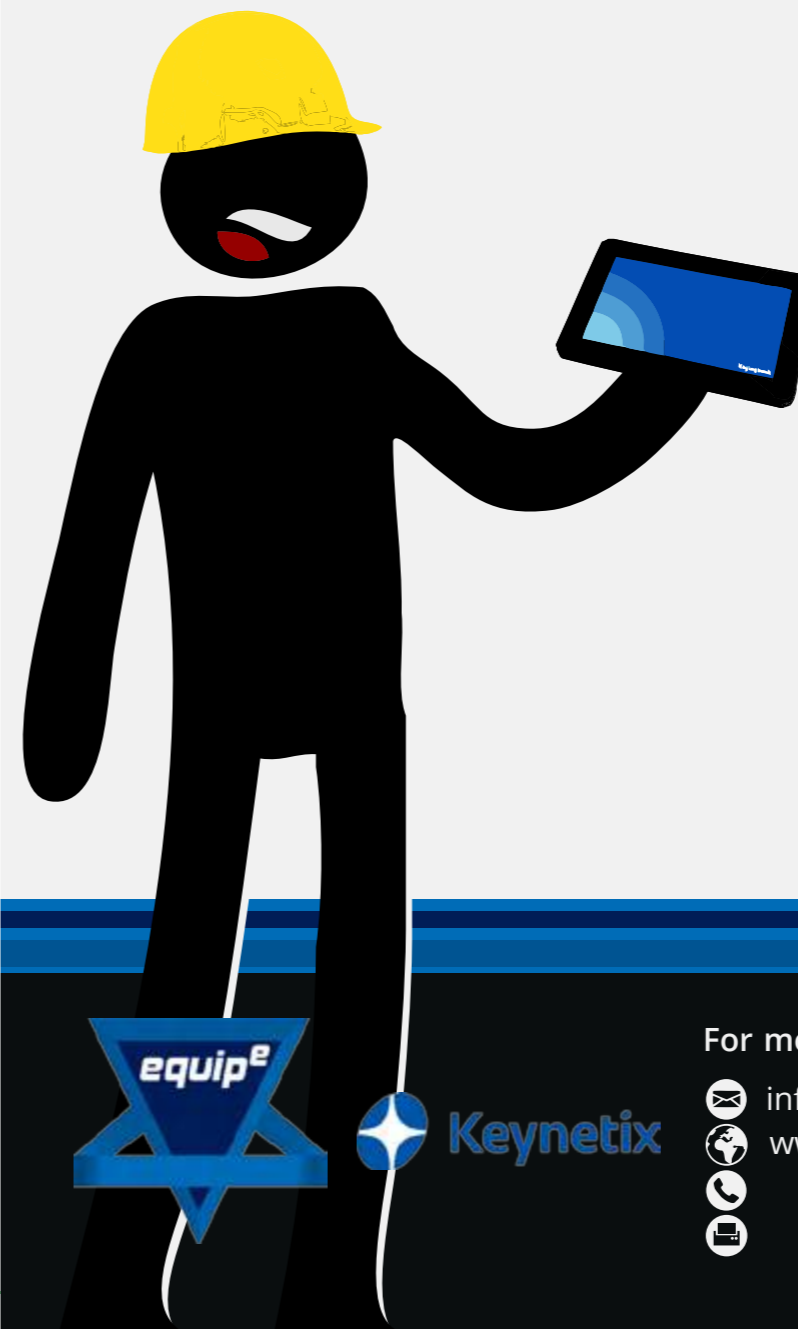
- Revolutionises the way site data is captured, recorded and transmitted
- **Confidence that all data is complete**
- AGS Data available immediately
- **Accurate financial control**
- Quicker, more efficient turnaround of logs and data
- **Easier to maintain chain of custody**
- NEW TRIAL PIT LOGGING FUNCTION

**FULL PACKAGE AVAILABLE FOR PURCHASE NOW**  
**30 DAY FREE TRIAL AVAILABLE FOR DOWNLOAD NOW**

Full Package Price:  
**£3995 + VAT**

Weekly Lease Price:  
**£32 + VAT**

More information?  
**CONTACT US**



For more information, contact Equipe Geosolutions:

- ✉ info@equipegroup.com
- 🌐 www.equipegroup.com
- ☎ +44 (0)1295 670990
- 📠 +44 (0)1295 678232

- 🌐 Equipe Group
- 🐦 @EquipeGroup
- 📺 EquipeGroup



**“Attendees of Geotechnica 2016’s conference will have the opportunity to directly discuss the Task Force’s motives, aims and ambitions for creating a clear, unbiased picture of the current UK GI industry.”**

start with a review of the ‘state of the industry’. This will be a summary of where the industry is now and if it is in a strong position moving forward. The session will also discuss whether the UK can learn lessons from international

practices and techniques.

**theGeotechnica** has recently published updates and information on the Association of Geotechnical and Geoenvironmental Specialists and British Drilling Associations’ new Task Force initiative. The Initiative’s Position Paper has recently been published and Geotechnica 2016 will see its Chairman, Andrew Milne of Geotechnical Engineering, discuss the paper’s content. Attendees of Geotechnica 2016’s conference will have the opportunity to directly discuss the Task Force’s motives, aims and ambitions for creating a clear, unbiased picture of the current UK GI industry.

Other speakers in this session include: Professor David Norbury who will ask whether the UK industry can acquire any wisdom from other European infrastructure projects; Ben Gilson of Arup who will

examine the linear history of UK GI infrastructure projects, and whether any lessons can be learnt regarding their suitability for investigating mass soil property characteristics; Nick Sartain, Lead Geotechnical Engineer on HS2 who will reveal the challenges that have arisen on the HS2 project; and finally Dr Jackie Skipper of the Geotechnical Consulting Group who will emphasize why investigating and understanding the ground is so vital to even the smallest of projects.

**Innovation and Emerging Technologies - Where next for the industry?**

The final session of Geotechnica 2016 will focus squarely on innovation. One way the UK GI sector can make large steps forward is product and service innovation.

This session will discuss hot

topics within the industry which will help forge a better and stronger industry moving forward. The speakers will highlight new approaches, innovation and emerging technologies which if embraced could open up a new direction for the industry and new opportunities.

Speakers in this final session include Diego Marchetti who will discuss the flat dilatometer, Dr Roger Chandler who will delve into the world of digital data management for geotechnical projects, and finally Adrian Wilkinson of DroneSurv who will explain the benefits of using drones for GI projects.

**The Geotechnical Academy “The Geotechnical Academy will again be at Geotechnica to demonstrate how it can provide a unique learning experience for young geo-professionals.”**

The Geotechnical Academy will again be at Geotechnica to demonstrate how it can provide a unique learning experience for young geo-professionals. The training is designed to be fundamentally vocational, with many opportunities throughout the modules to participate in practical activities such as rig audits, insitu

testing, laboratory testing, site visits and production of a ground model. An important aspect of The Geotechnical Academy is to allow delegates to gain knowledge through a shared learning experience with delegates from different facets of the geotechnical industry. The Geotechnical Academy frequently brings together main contractors, specialist contractors and geo-environmental and geotechnical consultants, all with very different experiences of the industry.

This year at Geotechnica, The Geotechnical Academy will host their own complimentary seminar, offering an innovative learning experience for all geo-professionals as well as providing an opportunity to experience first-hand the type of experience delegates can expect if they attend The Geotechnical Academy. The event is being supported by ALcontrol, Lankelma, Keynetix, Equipe and Geotechnical Engineering Ltd who, along with other companies, all contribute to individual Academy modules throughout the year.

Come along and experience The Geotechnical Academy Fringe Festival across both days at Geotechnica and contribute to enabling your geo-professionals to provide a quality service to the construction industry.

**Packed exhibition line-up**

The exhibition line-up for this year’s event is completely sold out, and has been for many

**“Geotechnica has always boasted the most varied and robust line-up of exhibitors in the UK, however the offering in 2016 sees a host of brand new names.”**

months – a testament to the success of previous year’s exhibitions. Geotechnica has always boasted the most varied and robust line-up of exhibitors in the UK, however the offering in 2016 sees a host of brand new names. Companies from all areas and corners of the industry will be represented, with the very best in geophysics, ground investigation specialists, geotechnical product innovations, environmental and geotechnical laboratories, drilling rig, plant and equipment suppliers, instrumentation and geothermal specialists all out to impress the hundreds of attendees. ■

**Geotechnica 2016 will be held on 6th and 7th July at Brunel Universtiy, London. Tickets for this year’s event are £150 + VAT per person and registration closes on the 1st July. To register for your place and for more information, visit [www.geotechnica.co.uk](http://www.geotechnica.co.uk); follow us on Twitter @equipegroup and visit the Equipe Group LinkedIn page.**

# SAFER | G



## THE WORLD'S FIRST SENSOR-BASED ROTARY RIG GUARD

Introducing Equipe Geosolutions' latest product innovation: SAFER G.

Primarily aimed at **land based rotary drilling rigs**, SAFER G is a **sensor-based guarding system** that allows for **increased access and productivity** whilst operating on site, removing the need for restrictive and fully enclosing guarding systems.

### THE BENEFITS OF SAFER G

- Improves rig **productivity**.
- Improves **personnel protection**.
- **Complies** with all safety and machinery legislation.
- **Complies** with EN 16228 Parts 1 & 2.
- Compatible with **all rig types**.
- Creates a **safer work environment**.

Carries **FULL CE marking** as a safety device.



CONTACT US FOR MORE INFORMATION:  
[SALES@SAFER-G.COM](mailto:SALES@SAFER-G.COM)

OR VISIT US ONLINE:  
[WWW.SAFER-G.COM](http://WWW.SAFER-G.COM)



## THE WORLD'S FIRST SENSOR-BASED SAFER | G ROTARY RIG GUARD

### TECHNICAL DETAILS & INFORMATION

- SAFER G removes the need for gated type guards by providing a safe-guarded zone.
- SAFER G provides a safety zone between 0.5m from the floor to 1.8m from the floor where operators cannot enter.
- SAFER G cannot be easily bypassed or disabled.
- Integration of self-checking diagnostics system which ensures the 'failure to safe' mechanism is present at all times.
- SAFER G can detect an object moving anywhere within a safe-guarded zone.
- Ability to differentiate between small and large objects (muds, liquids and dust particles vs. people).

CONTACT US FOR MORE INFORMATION:  
[SALES@SAFER-G.COM](mailto:SALES@SAFER-G.COM)

OR VISIT US ONLINE:  
[WWW.SAFER-G.COM](http://WWW.SAFER-G.COM)



For more information, contact Equipe Geosolutions:

[info@equipegroup.com](mailto:info@equipegroup.com)  
 [www.equipegroup.com](http://www.equipegroup.com)  
 +44 (0)1295 670990

Equipe Group  
 @EquipeGroup  
 EquipeGroup



[info@equipegroup.com](mailto:info@equipegroup.com)  
 [www.equipegroup.com](http://www.equipegroup.com)  
 +44 (0)1295 670990

Equipe Group  
 @EquipeGroup  
 EquipeGroup

# USING WATER SAFELY AND LEGALLY

Providing the fifth in a series of pieces for theGeotechnica is Liz Withington, Senior Manager at [Geotechnical Engineering Ltd](#). The safe and legal use of water on geotechnical sites is the subject of Liz's latest advisory pieces.

Out on site in the ground investigation industry we frequently need to use water for drilling operations and soakaway testing. But where do we get this water from, what tools do we need and what legislation covers the extraction? In this article we hope to provide useful, clear and practical guidance to everyone from the new site engineer to the most experienced drilling operative.

## **“Before you even go to site you need to establish in which water company area your site is in.”**

Before you even go to site you need to establish in which water company area your site is in. Useful maps can be found at [Ofwat](#) or [CON29DW](#). It is a serious criminal offence

to use an unauthorised standpipe and so to find a licensed provider you need to contact the individual water company or suppliers such as [AQUAM](#) to arrange a hire. Only standpipes issued by the water company or their agent and with a current completed hire agreement can be used in each particular water company area.

Once on site you need to establish where to get the water from. You will need to identify a “washout hydrant”. A washout hydrant is owned by the water company and is an accessible valve in a water supply main that is used to run dirty water out of a system following repair work. Its metal cover is usually marked with a WO. For our ground investigation purposes we can take water from this source, but it must not be used for drinking or cooking purposes.

Do not take water from a Fire



## **“Taking water from a fire brigade hydrant is therefore both an offence and also has the potential to contaminate drinking water supplies.”**

Brigade hydrant, they are owned by the Fire Brigade and must not be used by anyone

else. Taking water from a fire brigade hydrant is therefore both an offence and also has the potential to contaminate drinking water supplies. Fire hydrants are easily identified by their yellow colour and are often accompanied by a yellow H plate.

Once the correct washout has been identified and the correct standpipe is ready for use there are a number of stages to remember:

1. You will be connecting to the public water supply system.

You are responsible for taking steps to avoid contamination. Failure to do so may render you liable to prosecution under the Water Industry Act 1991.

2. Is the washout in a location that is safe for both the operative and members of the public? If not, find another washout.

3. Lift the cover safely using the appropriate lifting keys.

4. Protect the open cover using appropriate signage and guarding to National Road and

Street Work standards.

5. If the washout hydrant chamber is full of water or debris, it should be cleaned out to at least 150mm below connection point.

6. Remove the covering cap from hydrant bowl and retain in a safe place.

7. Open the valve slowly (no more than one turn every 30 seconds) to remove debris from hydrant and washout bowl, do not fill the chamber. Most hydrant valves open



(no faster than one full turn every 30 seconds) and check for leaks. If opened too quickly there is a risk that in older systems you may cause a mains burst.

10. If you are unable to operate the valve or the hydrant leaks, seek an alternative hydrant and report the faulty apparatus.

11. Where a flexible hose is connected to the standpipe, care must be taken to ensure that the end of the hose cannot become submerged in the bowser or IBC. An air gap must be maintained if used to fill any receptacle, bowser or tank.

12. In frosty conditions drain the standpipe to prevent damage to backflow device, and take appropriate precautions with water spillage.

13. Close down the hydrant valve slowly, check for leaks, remove standpipe, refit cap and replace chamber cover securely.

14. Standpipes should to be dismantled and the hydrant cover replaced when not being used.

15. The standpipe and key must be stored and transported away from other contaminated materials, containers and fittings.

And of course, if you are still not confident in carrying out these procedures you can ask for help, either from a competent colleague or ask for further training from one of the water supply companies. ■

Hydrant number      Pipe diameter



Distance      Barcode

anti-clockwise.

8. Close the valve slowly and attach the standpipe

making sure that standpipe taps are closed.

9. Open the valve slowly,

# QUALITY SLOPE DATA

from our innovative slope climbing rigs



01452 527743  
 geotech@geoeng.co.uk  
 www.geoeng.co.uk



**EQUIPE GROUP**

**SUB-CONTRACTORS DRILLING COMPLIANCE PACKAGE DEAL**

BDA Audit **£390 + VAT**  
 BDA Membership **£350 + VAT**

LOLER / PUWER Inspection (1 Rig + Accompanying Lifting Gear) **£75 + VAT**  
 SPT Calibration (1 Hammer/Dynamic Sampling Rig) **£100 + VAT**  
 Advert in the Geotechnica Directory for 12 Months (10 Issues) **£380 + VAT**

**ALL FOR JUST £700 + VAT**

**PLUS!** FREE subscription to the Geotechnica Industry Magazine  
 20% discount on any other advertising in the Geotechnica

Interested in Land Drilling NVQs, multiple SPT Calibrations or multiple LOLER Inspections?  
 Get in touch for a quote!

# Directory

## WANT TO ADVERTISE IN THE GEOTECHNICA?

1. Select your advert size.  
(Full, Half, Quarter Page, Directory Entry, etc)
2. Select timescale.  
(1, 3, 6 or 12 Months)
3. Format your artwork.  
(Adobe PDF, .jpg or .png)
4. Send your artwork to us.  
([magazine@geotechnica.co.uk](mailto:magazine@geotechnica.co.uk),  
or contact us on +44 (0)1295 670990

Advert Size	Single Insertion
Double Page	£980
Full Page	£550
Half Page	£310
Third Page	£260
Quarter Page	£160
Sixth Page	£125
Directory Entry (Art)	£40

Rates for advertisements placed for longer than a single month are negotiable. Please contact [magazine@geotechnica.co.uk](mailto:magazine@geotechnica.co.uk) for details.

2016 Advertising Rates (£) - All rates are given excluding VAT.

ADVERTISE HERE FOR JUST £40 A MONTH  
OR £380 FOR 12 MONTHS (10 ISSUES)

### drilling contractors



Any borehole. Any depth.  
Anytime. Anywhere.

**Borehole Solutions Ltd HQ**  
25 Aaron Road  
Whittlesey  
Peterborough  
PE7 2EX

T: 01733 200501 | M: 07969 715655  
E: [boreholesolutions@gmail.com](mailto:boreholesolutions@gmail.com)

### geophysics



European Geophysical Services  
Delivering geexcellence.

European Geophysical Services Limited  
22 Sansaw Business Park, Hadnall,  
Shrewsbury, Shropshire SY4 4AS, UK

Telephone: +44 (0)1939 210 710  
Fax: +44 (0)1939 210 532  
Email: [eurogeophys@europeangeophysical.com](mailto:eurogeophys@europeangeophysical.com)  
Web: [www.europeangeophysical.com](http://www.europeangeophysical.com)



TerraDat  
geophysical innovation

Engineering & Environmental Geophysics

TerraDat UK Ltd  
Unit 1, Link Trade Park  
Cardiff CF11 8TQ  
United Kingdom

Phone: +44 (0)8707 303050  
Fax: +44 (0)8707 303051  
Email: [web@terra-dat.co.uk](mailto:web@terra-dat.co.uk)  
Web: [www.terra-dat.co.uk](http://www.terra-dat.co.uk)

### geotechnical specialists

Soils Limited  
Newton House  
Tadworth  
Surrey  
KT20 5SR



Geotechnical and  
Environmental Consultants

Phone 01737 814221  
Fax 01737 812557  
Web [www.soilslimited.co.uk](http://www.soilslimited.co.uk)

### geotechnical software



Keynetix  
Geotechnical Data  
Software Transformed

[keynetix.com/experience](http://keynetix.com/experience)

### health and safety



RPA SAFETY SERVICES Ltd  
SAFETY SERVICES FOR BUSINESSES




Registered Consultant

Email: [enquiries@rpsafetyservices.co.uk](mailto:enquiries@rpsafetyservices.co.uk)  
Telephone: +44 (0)1933 382004  
Web: [www.rpsafetyservices.co.uk](http://www.rpsafetyservices.co.uk)

### laboratories



THE RIGHT CHEMISTRY  
TO DELIVER RESULTS

11 Depot Road, Newmarket, CB8 0AL  
Telephone: +44 (0)1638 606 070 | Fax: +44 (0)1638 606 071  
Email: [sales@chemtest.co.uk](mailto:sales@chemtest.co.uk) | Website: [www.chemtest.co.uk](http://www.chemtest.co.uk)

### site investigation



Site Investigations, Consultancy and  
Laboratory Testing

Concept Consultants  
Unit 8 Warple Mews,  
Warple Way, London, W3 0RF  
United Kingdom

Tel: +44 (0)20 8811 2880  
Fax: +44 (0)20 8811 2881  
Email: [si@conceptconsultants.co.uk](mailto:si@conceptconsultants.co.uk)  
Web: [www.conceptconsultants.co.uk](http://www.conceptconsultants.co.uk)



geotechnical  
A ground investigation you can rely on.

Geotechnical Engineering Limited  
Centurion House  
Olympus Business Park  
Quevedley, Gloucester  
GL2 4NF

Telephone: +44 (0)1452 527743  
Fax: +44 (0)1452 729314  
Email: [geotech@geoeng.co.uk](mailto:geotech@geoeng.co.uk)  
Web: [www.geoeng.co.uk](http://www.geoeng.co.uk)



# theGeotechnica



*Driving our industry forward...*

Equipe Group  
The Paddocks, Home Farm Drive  
The Upton Estate  
Banbury, OX15 6HU

Find us online:



Equipe Group



@EquipeGroup



Equipe Group



Equipe Group